



# Key Studio Theatre Peterborough Technical Specification

REVISED JULY 2024



## Theatre Contacts:

### General Manager

Jag Singh – [jag.singh@landmarktheatres.co.uk](mailto:jag.singh@landmarktheatres.co.uk)

### Technical Manager

Matt Oscroft - [matt.oscroft@landmarktheatres.co.uk](mailto:matt.oscroft@landmarktheatres.co.uk)

### Ticketing and Audience Insight Manager

Louise Waldron – [louise.waldron@landmarktheatres.co.uk](mailto:louise.waldron@landmarktheatres.co.uk)

### Operations Manager

Belinda Ayres - [belinda.ayres@landmarktheatres.co.uk](mailto:belinda.ayres@landmarktheatres.co.uk)

### Content Manager

Natalie Phillips – [natalie.phillips@landmarktheatres.co.uk](mailto:natalie.phillips@landmarktheatres.co.uk)



## Addresses:

**Key Theatre Peterborough**

**Embankment Road**

**Peterborough**

**Cambridgeshire**

**PE1 1EF**

The Theatre has a public pay and display adjacent to the building. For production and entry to the Loading bay you will need to pass through a locked gate, in order to gain access, when you arrive proceed to the box office and let them know you are here, and they will call the Duty Technician to unlock the gates.

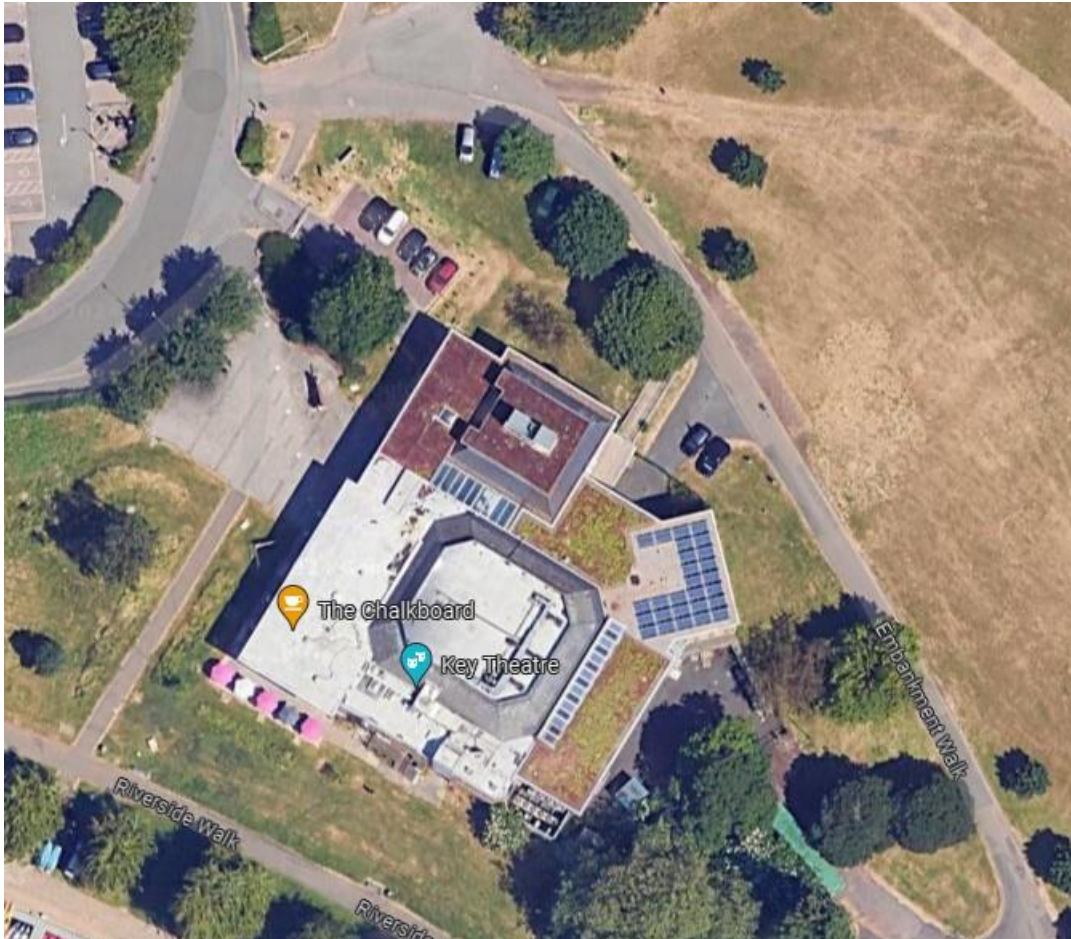
Once at the loading bay, and unloaded you are welcome to leave your vehicle on the loading bay. Performer cars may be parked on the grass adjacent to the dock door however this has to be done safely and on a first come, first served basis.

Please take care when driving on the Embankment as this is also a pedestrian footpath.



## Parking Information Continued:

What3Words Location: fuzzy.deny.evenly



## Health and Safety

### THE FOLLOWING REGULATIONS FORM AN INTEGRAL PART OF THE STANDARD NEW THEATRE CONTRACT

1) Any electrical equipment brought into the Key Theatre by, or on behalf of the Production must strictly comply with the current regulations for the Electrical Equipment of Buildings and carry a current PAT test certificate. The Production's equipment and its installation, removal and maintenance is the responsibility of the Production company and must, at all times, be under the supervision of a qualified person.

2) The Production shall ensure that all electrical equipment and tools brought to site, comply with all relevant statutory requirements including the "Electricity at Work Regulations 1989". Such equipment and/or tools shall be operated and used in a safe manner and the Production Manager shall make available for inspection, evidence that the equipment has been tested in accordance with **PUWER** regulations.

3) The Technical Manager reserves the right to instruct the Production Manager, where equipment and/or cables may be positioned within the Auditorium or other parts of the building accessible to the general public and may delay the performance until the Production has satisfied that any such equipment and/or cables may not interfere with the safety of the public or the staff of the Key Theatre.

4) All lifting and suspension equipment brought to site by the Production must comply with all current legislation and the promoter shall make available for inspection, evidence that the equipment has been tested and examined in accordance with current LOLER legislations. \*\*

#### **\*\*Lifting Operations and Lifting Equipment Regulations 1998 (LOLER)**

5) The Production Company shall have carried out and have available, risk assessments of all special effects used in the production, and of all perceived hazards associated with the unloading, manual handling, erection and reloading of all scenery and electrical equipment brought to site. Written assessments of significant risks in the workplace are required by law - ref. The Management of Health and Safety at Work Regulations 1992 (Regulation 3).

6) It is expected that the Tour Manager, or Deputy, will discuss with the Key Theatre Staff, the fit-up of the production prior to commencement based on a prepared Method Statement, this should be done at the time of the initial CDM Briefing.

7) Advanced notice is required of any proposed use of flame/fire effects and pyrotechnics.

8) The Production agrees to fully compensate the Key Theatre for: Any loss or damage to the Theatre or its fixtures and fittings arising during the use of the Theatre by the Promotor or after the Production and including consequential loss.



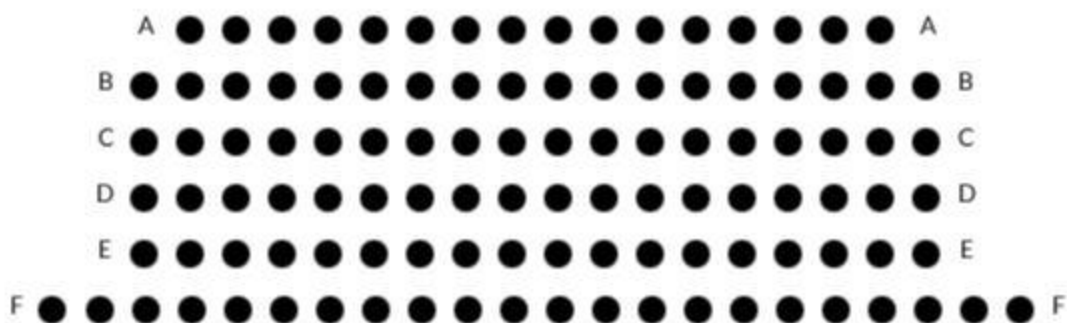
## Theatre Seating Capacity:

Full Capacity: 108 Seats  
(Retractable Bleacher Seats)

Any change in capacity should be discussed at the booking stage of your visit to us.



# STAGE



## Stage Information & Dimensions

The space is a Black Box space. Drapes are permanently rigged to give wings and backstage area; however, these are on tracks and can be moved to provide a bigger performance / Rehearsal space. The performance area and seating are all on the same level.

**\*\*\* PLEASE NOTE THIS SPACE DOES NOT HAVE A SAFETY CURTAIN \*\*\***

**Rake:** NO RAKE

**Height of the Grid** – 5500mm

**Width of the Area** – 10,000mm

**Depth of Space** - 6,000mm

**Loading door** - W 2814mm x H 2747mm

### Rigging :

Please note, this is a fixed grid system, with no flying achievable.

### Access:

All lighting in the studio is accessed via Tallescope or Zarge ladders for rigging and focusing. Additional staff may be required if the Tallescope is to be used in order to meet Health & Safety standards / Safe Working at height Practices.

### Control Room:

The control room has a glass window, that can be either open or closed, and house both Lx and Sound Desks. HDMI connection available here for the projector.



## Dressing Rooms:

Within the contract and tenancy of the Studio space you get 1 dressing room. Additional dressing rooms are available, but this is subject to availability and Programming in the main house.

	Room	Capacity	Total	
Ground Floor	Dressing Room 9	7		

## Lighting:

### Control and Dimming

ETC Nomad with 20way fader bank

1 x Single universe of DMX controlling all in-house equipment

24 channels of ETC Smartpack Dimming hardwired to grid (see plan)

### Lanterns

The Chauvet LED Pars provide house lighting and are permanently fixed in their positions.

Please see the attached lighting plan and patch sheet for how our studio theatre lighting is set-up. Some minor tweaks/movements can be made with prior arrangements. For any larger Pre-Rigs / LX changes, please contact and discuss this with the Technical Manager for pre-rig availability.

This service is subject to additional recharges.

## Audio Visual:

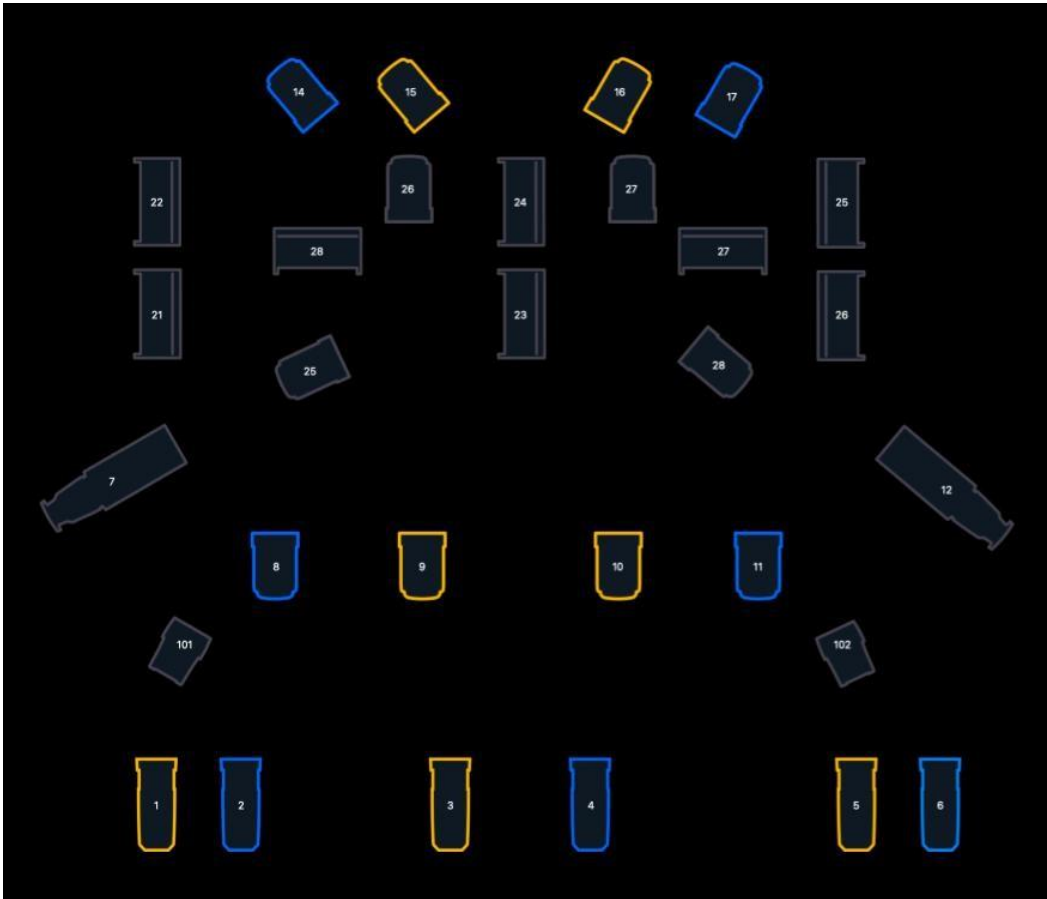
One projector is available with a permanently rigged screen up stage. This is available to use at additional cost on discussion with the Technical Manager. It is available with a VGA or HDMI input from the control box or VGA from stage.





# Circuit Diagram Layout:

# Studio Fixed LX Plan:



## Sound:

### Playback and Control

Yamaha TF3

8-input, 4-return Multicore from USC to control room

### Speakers

Turbosound active speaker system installed with flown boxes each side, controlled from Control room.

### Microphones :

A small selection of microphones (SM57's & SM58's) and DI boxes are available by prior request, along with stands. As standard there will always be the facility to playback using a 3.5mm jack.

### Comms:

Please note: Our studio theatre does not have a comms system.

We do have a back of house call mic in the control box. This leads to dressing room 9 & our rehearsal space. This is only a one-way system. There is no talk back feature with this.



## Special Effects:

Recharges apply-

- Chauvet 4D Hurricane Hazer
- Martin Glaciator Low Fogger
- Look Solutions Viper Fog Machine
- 4 x Chauvet Geysers p7

*Please advise in advance as we cannot guarantee to stock enough fluid for all machines.*

**Please get in touch with Technical Manager to confirm your show requirements. As not all equipment listed may be available on your visit. Additional charges may apply to some items listed.**





**KEY**

**THEATRE**

**PETERBOROUGH**