



Key Theatre Peterborough Technical Specification

REVISED JULY 2024



Theatre Contacts:

General Manager

Jag Singh – jag.singh@landmarktheatres.co.uk

Technical Manager

Matt Oscroft - matt.oscroft@landmarktheatres.co.uk

Ticketing and Audience Insight Manager

Louise Waldron – louise.waldron@landmarktheatres.co.uk

Operations Manager

Belinda Ayres - belinda.ayres@landmarktheatres.co.uk

Content Manager

Natalie Phillips – natalie.phillips@landmarktheatres.co.uk



Addresses:

Key Theatre Peterborough

Embankment Road

Peterborough

Cambridgeshire

PE1 1EF

The Theatre has a public pay and display adjacent to the building. For production and entry to the Loading bay you will need to pass through a locked gate, in order to gain access, when you arrive proceed to the box office and let them know you are here, and they will call the Duty Technician to unlock the gates.

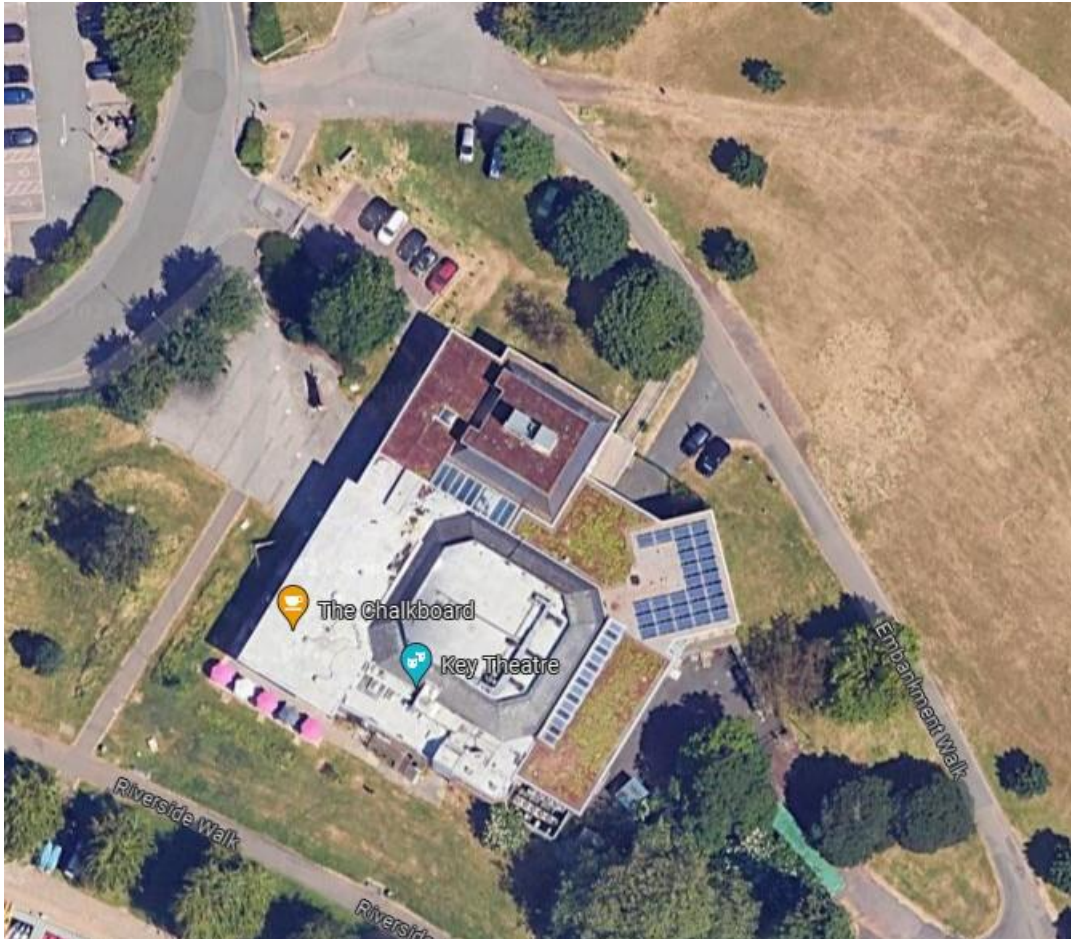
Once at the loading bay, and unloaded you are welcome to leave your vehicle on the loading bay. Performer cars may be parked on the grass adjacent to the dock door however this has to be done safely and on a first come, first served basis.

Please take care when driving on the Embankment as this is also a pedestrian footpath.



Parking Information Continued:

What3Words Location: fuzzy.deny.evenly



Health and Safety

THE FOLLOWING REGULATIONS FORM AN INTEGRAL PART OF THE STANDARD NEW THEATRE CONTRACT

- 1) Any electrical equipment brought into the Key Theatre by, or on behalf of the Production must strictly comply with the current regulations for the Electrical Equipment of Buildings and carry a current PAT test certificate. The Production's equipment and its installation, removal and maintenance is the responsibility of the Production company and must, at all times, be under the supervision of a qualified person.
- 2) The Production shall ensure that all electrical equipment and tools brought to site, comply with all relevant statutory requirements including the "Electricity at Work Regulations 1989". Such equipment and/or tools shall be operated and used in a safe manner and the Production Manager shall make available for inspection, evidence that the equipment has been tested in accordance with **PUWER** regulations.
- 3) The Technical Manager reserves the right to instruct the Production Manager, where equipment and/or cables may be positioned within the Auditorium or other parts of the building accessible to the general public and may delay the performance until the Production has satisfied that any such equipment and/or cables may not interfere with the safety of the public or the staff of the Key Theatre.
- 4) All lifting and suspension equipment brought to site by the Production must comply with all current legislation and the promoter shall make available for inspection, evidence that the equipment has been tested and examined in accordance with current LOLER legislations. **

****Lifting Operations and Lifting Equipment Regulations 1998 (LOLER)**

- 5) The Production Company shall have carried out and have available, risk assessments of all special effects used in the production, and of all perceived hazards associated with the unloading, manual handling, erection and reloading of all scenery and electrical equipment brought to site. Written assessments of significant risks in the workplace are required by law - ref. The Management of Health and Safety at Work Regulations 1992 (Regulation 3).
- 6) It is expected that the Tour Manager, or Deputy, will discuss with the Key Theatre Staff, the fit-up of the production prior to commencement based on a prepared Method Statement, this should be done at the time of the initial CDM Briefing.
- 7) Advanced notice is required of any proposed use of flame/fire effects and pyrotechnics.
- 8) The Production agrees to fully compensate the Key Theatre for: Any loss or damage to the Theatre or its fixtures and fittings arising during the use of the Theatre by the Promotor or after the Production and including consequential loss.

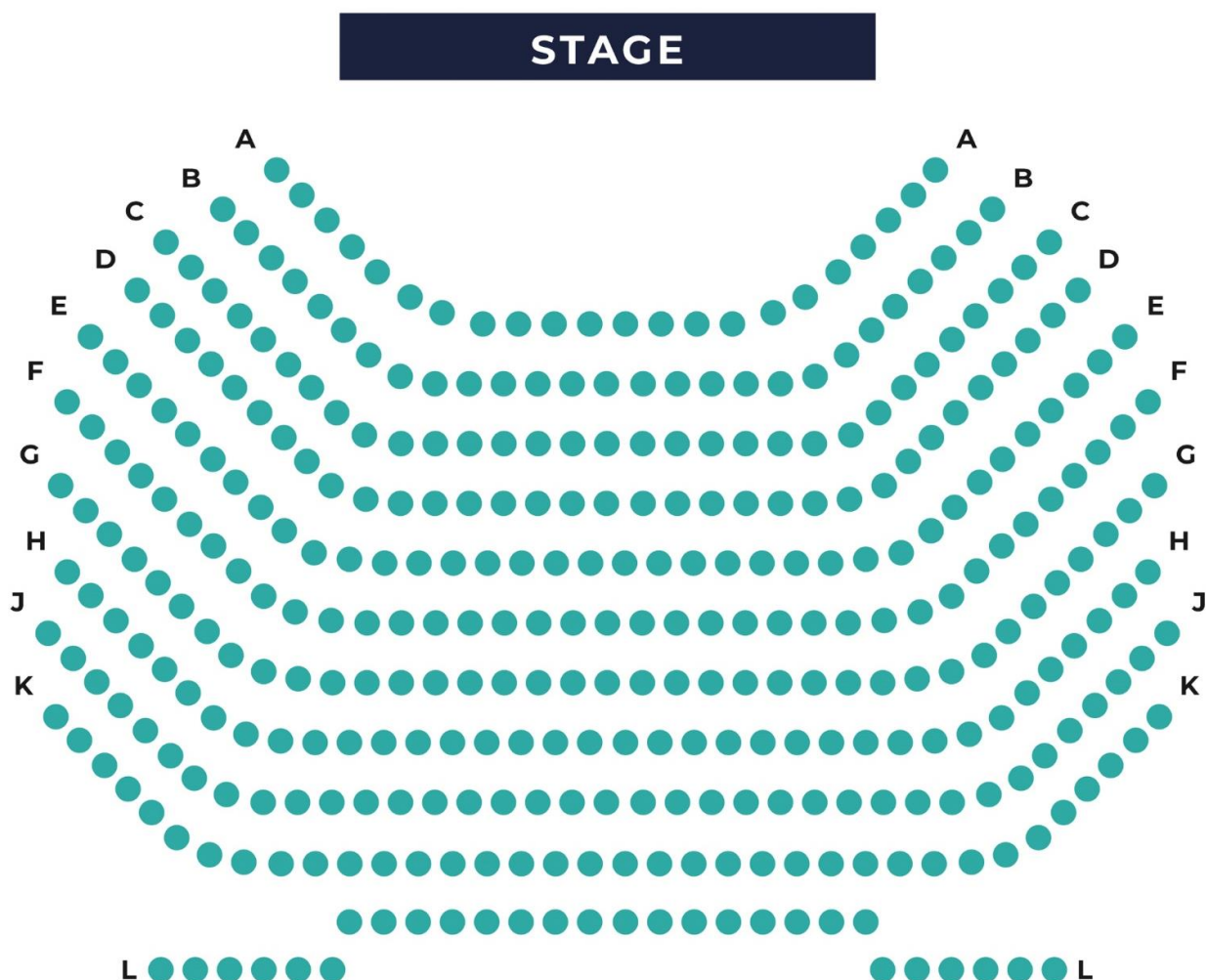
Theatre Seating Capacity:

Full Capacity: 360 Seats (Including flexible access requirements)

Sound Desk: reduces capacity to 344 (16 seats)

Full Pit: reduces capacity to 338 (22 seats)

Any change in capacity should be discussed at the booking stage of your visit to us.



Stage Information & Dimensions

The Stage is a thrust stage with easy access to the auditorium, there is no physical proscenium arch, and the lighting grid is exposed overhead. Black hard masking are used to define the downstage front sides of the stage.

House tabs are permanently rigged downstage and are electronically operated from the stage left wing, prompt corner

***** PLEASE NOTE WE DO NOT HAVE A SAFETY CURTAIN *****

Rake: NO RAKE

Height of the Proscenium – 5900mm

Width of the Proscenium - 11,000mm

Thrust Depth- 2400mm

Depth of Stage (including thrust) - 10,600mm

Loading door - W 2814mm x H 2747mm

Overall width (wing to Wing) - 20,700mm

Stage height from auditorium floor - 1220mm

Rigging :

Please note, we are a none flying house, our rigging is in the form of 10 x Power Drive bars, operated by a Power drill. 5 of these bars contain the permanently rigged lighting rig.

4 x Fixed Curtain tracks are permanently rigged on the back wall, these contain the following:

- 1 x Starcloth
- 1 x Black Gauze
- 1 x White Gauze
- 1 x Spare

PLEASE NOTE THESE ARE NOT SUITABLE FOR LIVE FLYING DUE TO SPEED AND NOISE

Stage Equipment:

1x Medium Tallescope
1x 14 Rung Zarges
2x 8 Rung A-Frames

Drapes:

Red house tabs are located on the setting line (2.4m from front edge of stage) and are operated from Prompt Corner Stage Left or from the control box.

A selection of wing masking is available for use including hard black flats (Maximum 12 flats) or soft legs on an 'up down' Triple e track each side of stage.

Black mid stage tabs are available 5m from the back wall and are operated manually from stage left.

The venue also has a selection of braces, stage weights, conduit, scaffold tube. We also have an additional rigging stock, including SWR, span sets, and bow shackles.

Orchestra Pit :

A removable orchestra pit is located in the front row of the auditorium please advise at the time of booking if you require the use of this as time and staff will have to allocated for its installation and removal. Please note this will incur additional charges for the removal and reinstatement after your performance.

Stage Management:

Our prompt desk is located DSL and contains the following:

- Colour Video feed
- Infra-Red Video Feed
- Audio Monitor
- Cue Light Control
- Paging Microphone
- Stopwatch
- Comms feed

Up to 10 cue lights are available upon request.



Control Room:

The control room has a glass window, that can be either open or closed, and can house both Lx and Sound Desks. (Lighting Desk and sound desk are normally separated by a non-moveable cinema projector)

By prior arrangement (subject to recharges) it also houses 2x follow spots.

The sound mix position is in the center of the rear stalls. Maximum size for control is 2500mm. Please note that the sound control is located over seating and will need to be arranged prior to your arrival to allow us to block out seating on the plan.

Wardrobe:

Our Laundry area is situated on the same level as the stage. This area comprises of two washing machines and one tumble dryer.

On the first floor we do have a wardrobe / maintenance area that can be used by prior agreement.

Dressing Rooms:

	Room	Capacity	Total	
Ground Floor	Dressing Room 1	7		Fridge & Kettle
	Dressing Room 2	7		
	Dressing Room 3	7		
	Dressing Room 4	7		Fridge & Kettle
			28	
First Floor	Dressing Room 5	7		
	Dressing Room 6	7		
	Dressing Room 7	7		
	Dressing Room 8	7		
			28	Fridge, Kettle and Microwave in Kitchenet shared between dressing rooms.



Production Power:

Stage Left Power Supplies

2x 16-amp single phase
2x 32-amp single phase
2x 63-amp single phase

Stage Right Power Supplies

1x 32 Amp Three phase
3x 63 Amp Single phase
1x 63 Amp Three phase

Control Room:

2x 16-amp single phase
2x 32-amp single phase
2x 63-amp single phase



Lighting Equipment

Lighting Control :

ETC Gio Console with 2x20 fader wing

Three universes of DMX control the in-house lighting and house lights. Universes 1 and 2 are controlled via 5 pin DMX cable and universe 3 is controlled via Artnet.

IP address: 169.254.194.185 Net Mask: 255.0.0.0

- Universe 1 – House Lights, LED Fresnel's, star cloth, Dimmers, Non-Dims
- Universe 2 – LED Pars
- Universe 3 – Moving Lights (Recharged)/Additional Fixtures

Dimming :

288 x 10A ETC Sensor+ dimming racks hard wired to circuits.

32 x 15A non-dim outlets

Lantern Stock (Most permanently Rigged)

- 26 x ETC Source 4 15-30° Zoom
- 12 x ETC Source 4 25-50° Zoom
- 6 x ETC Source 4 Junior 25-50° Zoom
- 12 x ETC Source four par with medium lens
- 36 x Selecon Rama Warm White LED Fresnel
- 30 x COLORado 2-Quad Zooms (17 Channel TR16 Mode)
- 5 x Ovation CYC 1 FC (16 Channel Mode) (Permanently Rigged and non-movable)
- 5 x Ovation CYC 1 FC (16 Channel Mode)
- 1 x RGB Star cloth (Fixed Position)

Follow Spots

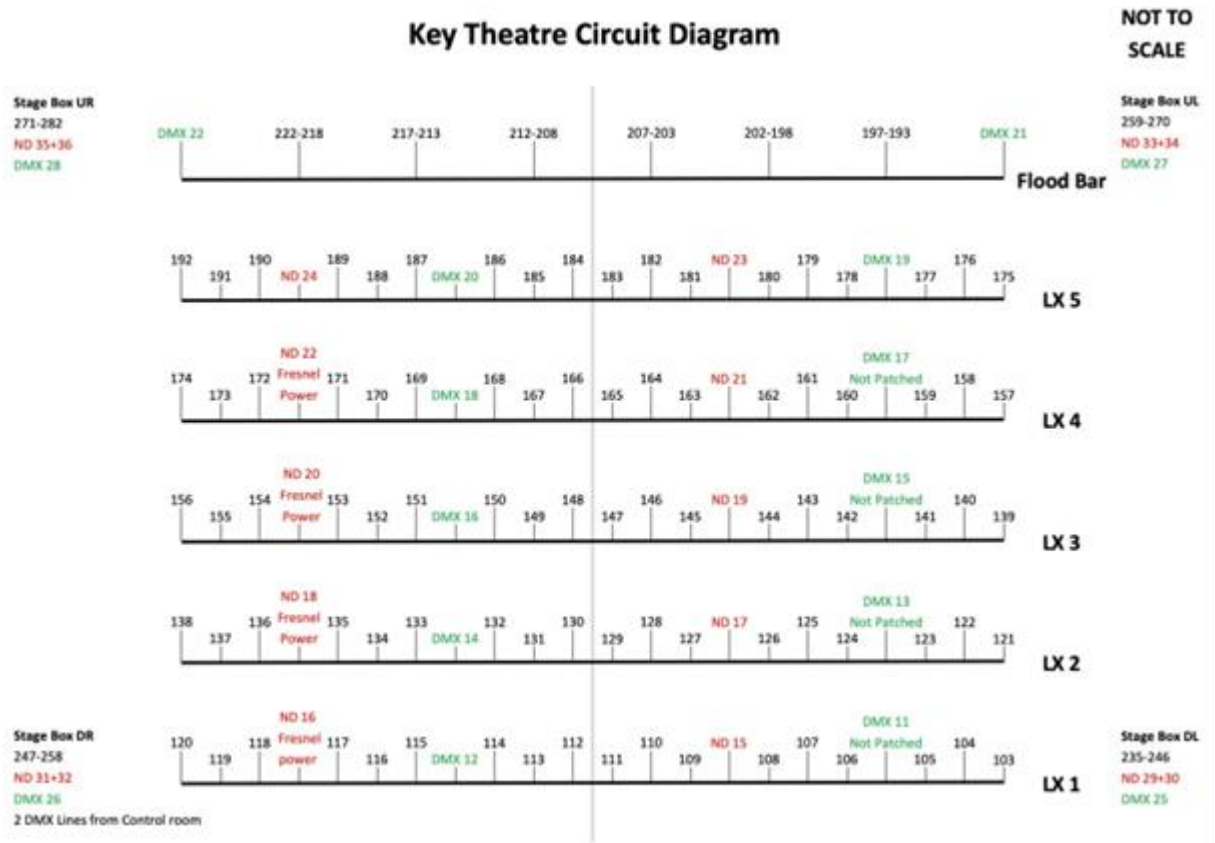
2x Robert Juliat Marius 8.5/16 degree 1200W discharge with 6 way colour changer

*******Subject to additional charges and increased labour*******



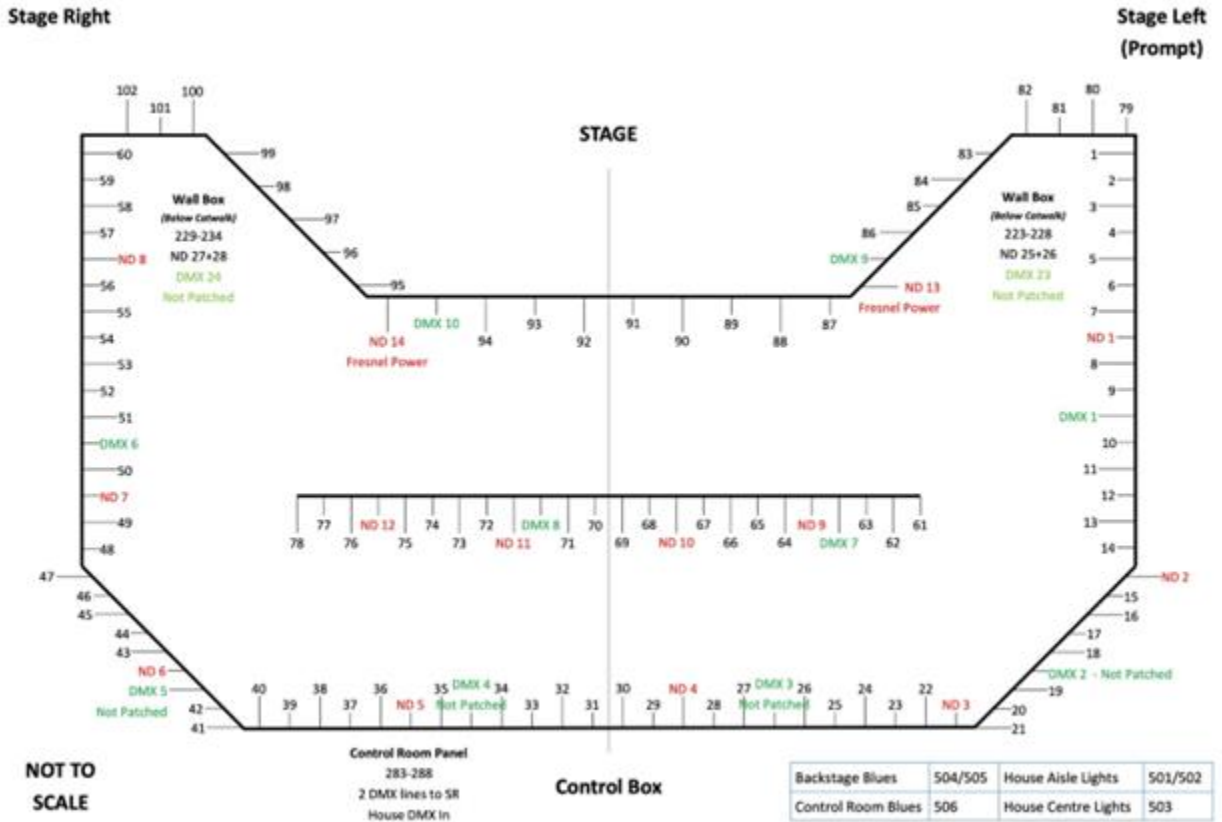
Circuit Diagram Layout:

Onstage:



Circuit Diagram Layout:

Front of House:



Sound Equipment:

PLEASE NOTE OUR EQUIPMENT STOCK IS LIMITED AND WE ARE NOT ABLE TO PROVIDE SOUND SERVICES FOR BANDS, THIS ALSO INCLUDES ENGINEERS.

Mixing Desk

The Venue has a Digico SD9 with 2 x SD racks

- 1 x Fixed permanently DSL and
- 1 x SD rack which can be positioned anywhere.

Analogue tie lines are available across the stage and in the control room.

House Sound Rig

Left-Centre-Right setup.

2 x EM Acoustics EMS-81X (centre fills from catwalk)

2 x EM Acoustics MSE-159

2 x JBL PRX800 Subs

2 x HK Premium Pro 15X Monitor (Passive)

Microphones

8 x Sennheiser Radio Microphones available by request, and subject to additional charges

Grand Piano

A Steinway Grand Piano is available to hire by prior arrangement. The theatre can also arrange for tuning for the piano.

Video / Projection

A Sony 4K cinema projector located in the box is also available at a recharge.
(Due to the fan noise, the control box window needs to be closed when this is in use)



Special Effects:

Recharges apply-

- Chauvet 4D Hurricane Hazer
- Martin Glaciator Low Fogger
- Look Solutions Viper Fog Machine
- 4 x Chauvet Geysers p7

Please advise in advance as we cannot guarantee to stock enough fluid for all machines.

Please get in touch with Technical Manager to confirm your show requirements. As not all equipment listed may be available on your visit. Additional charges may apply to some items listed.





KEY

THEATRE

PETERBOROUGH